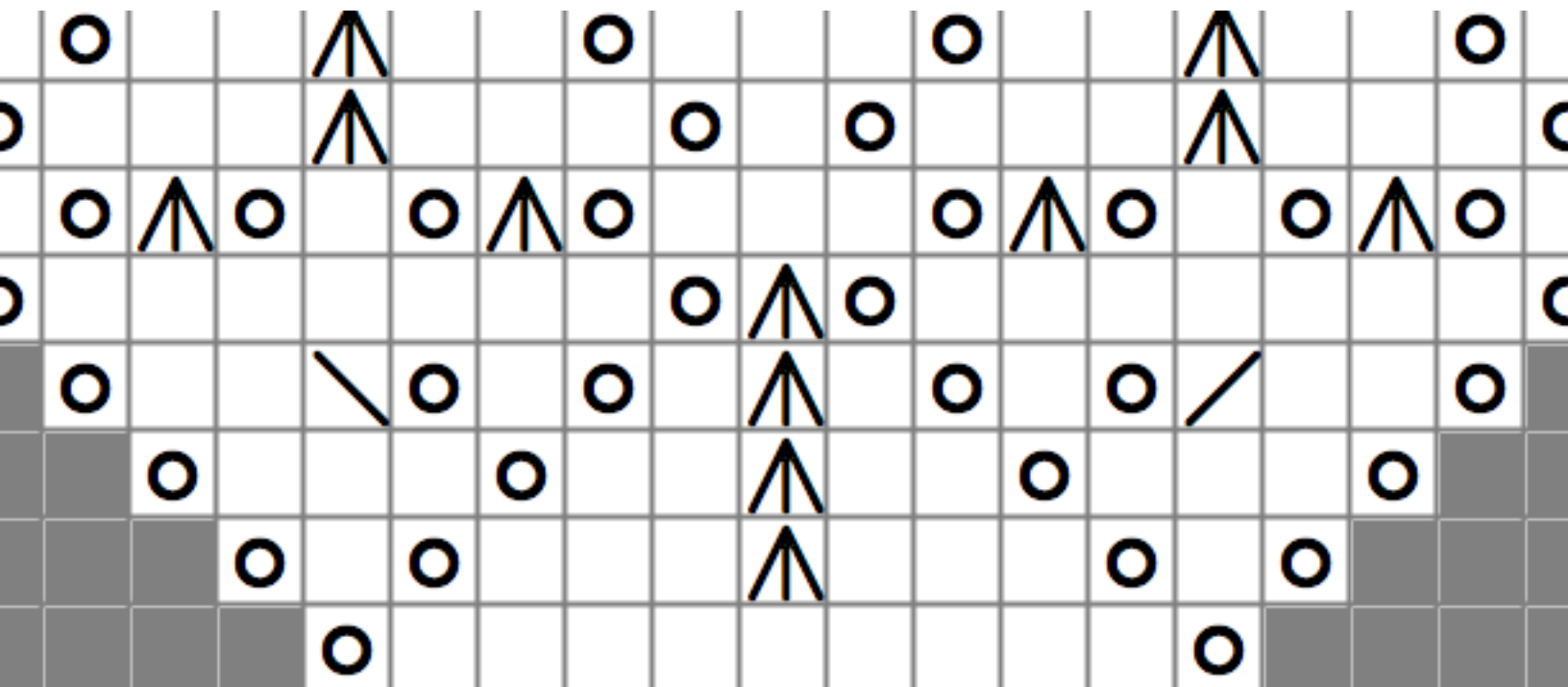


Shaping Lace

ADAPTING STITCH PATTERNS
TO FIT ANY SHAWL SHAPE



CONTENTS

Preface 7

Reading Charts 9

Knitting Symbols 10

Reading Charts 12

Working Flat or in the Round? 15

How to Read Chart Symbols on Wrong Side Rows? 16

Creating Charts 19

Adapting Stitch Patterns 20

The Basic Rules 20

Rule #1: Know Your Shape 21

Rule #2: Define Your Canvas 22

Rule #3: Design Within Your Canvas 24

An Example for Adapting Charts 26

Basic Shapes 31

Shawl Geometry Explained 32

Square Shawls & Stoles 35

Square Shawls Center Out 36

Square Shawls Worked Diagonally 37

Square Shawls Hem to Hem 38

Stoles 38

Triangle Shawls 39

Construction Methods 40

Triangles Worked Sideways 43

Triangles Worked Bottom-Up 43

Triangles Worked Top-Down 44

Triangles With Center Panels	44
Circular Shawls	47
Circular Shawl Construction	48
Circular Shawls Are Built Using Rectangles	48
What Makes Rectangles Circular?	50
Crescent Shawls	53
Short Row Crescent Shawls	54
Crescents Worked Sideways	56
Winged Crescents	57
Increase Crescents	58
Cornucopia Shawls	59
Construction	60
Cornucopia Shawl Stitch Patterns	61
Faroese Shawls	63
Traditional Faroese Shawls	64
Raglan Faroese Shawls	65
Other Shawl Shapes	67
Exotic Shawl Shapes	68
S-Shaped Shawls	68
Chart Templates	73
Rectangles	74
Crescents	82
Cornucopia	85
Example Patterns	91
Bluegrass	93
Powder Pink	103